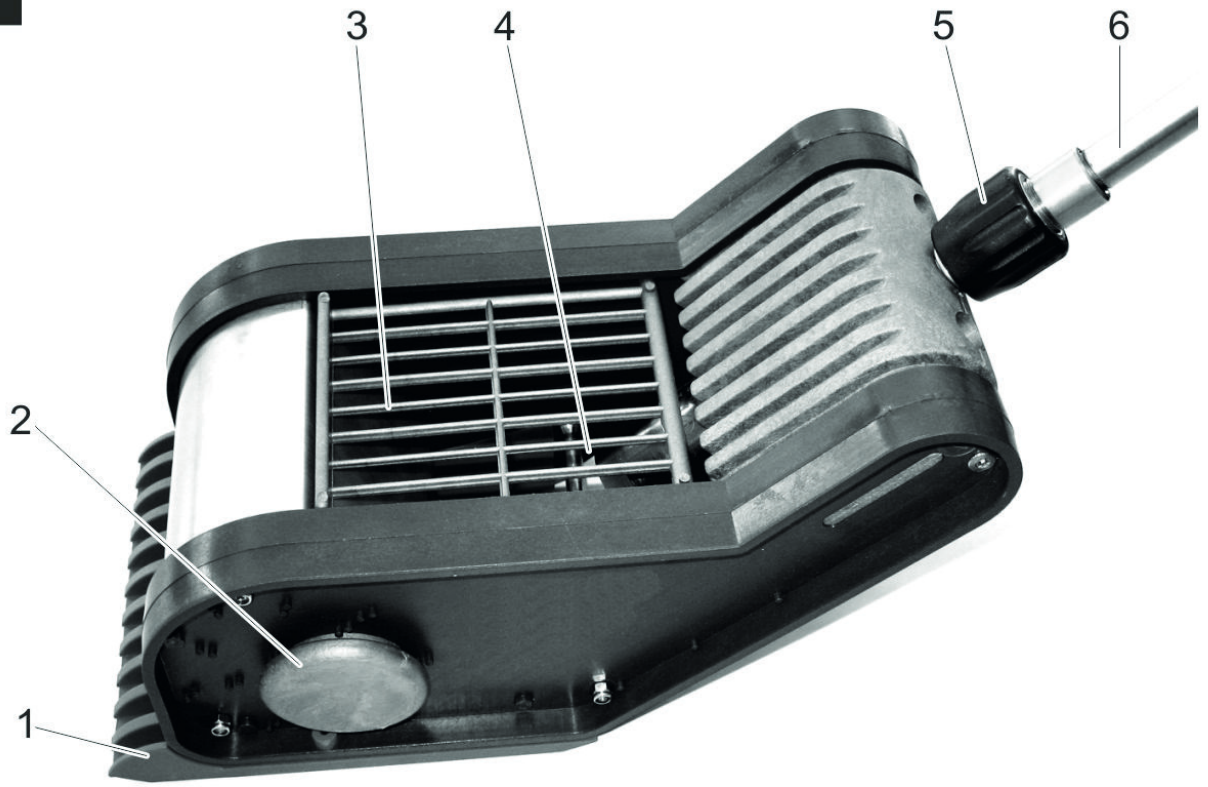


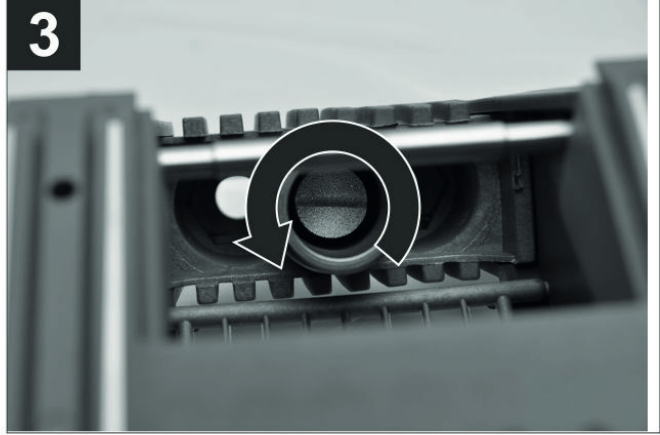
1



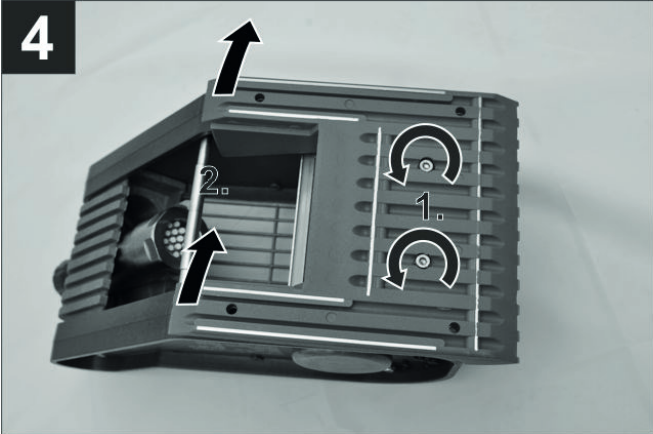
2



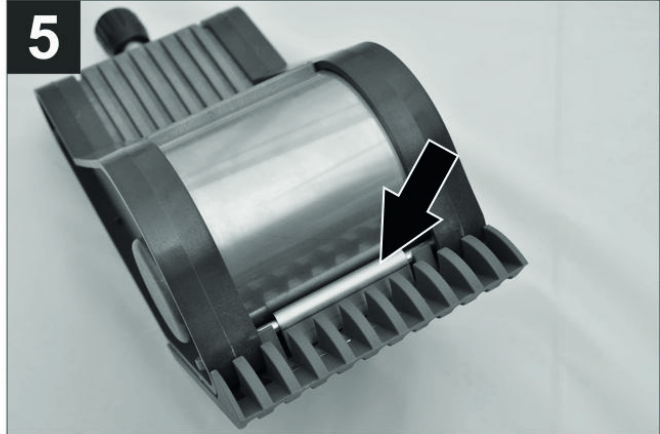
3



4




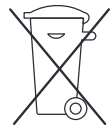
5





Please read and comply with these original instructions prior to the initial operation of your appliance and store them for later use or subsequent owners.

Environmental protection

	<p>The packaging material can be recycled. Please do not throw the packaging material into household waste; please send it for recycling.</p>
	<p>Old appliances contain valuable materials that can be recycled; these should be sent for recycling. Batteries, oil, and similar substances must not enter the environment. Please dispose of your old appliances using appropriate collection systems.</p>

Notes about the ingredients (REACH)

You will find current information about the ingredients at:

www.kaercher.com/REACH

Symbols in the operating instructions

Danger

Immediate danger that can cause severe injury or even death.

Warning

Possible hazardous situation that could lead to severe injury or even death.

Caution

Possible hazardous situation that could lead to mild injury to persons or damage to property.

Device elements

Figure 1, see cover page

- 1 Skid
- 2 Cover
- 3 Grid, can be swivelled upwards
- 4 Nozzles
- 5 Union joint
- 6 Spray lance

Proper use

- The appliance is suitable for removing chewing gum from solid floor surfaces. It is attached to a high pressure cleaner as a spray unit.
- The max. water pressure and the max. water temperature as per the specifications must not be exceeded.
- During hot water operation, there must be a lime scale protection unit inside the high pressure cleaner to prevent the calcification of the nozzles.
- The high pressure cleaner used must meet the performance requirements for minimum water pressure and minimum water volume (see "Specifications").

Safety instructions

- Please follow the national rules and regulations for fuel spray jets of the respective country.
- Please follow the national rules and regulations for accident prevention of the respective country.
- Follow the safety instructions in the operating instructions of the high pressure cleaner manufacturer!
- The high pressure jet may not be directed at persons, animals, live electrical equipment or at the high pressure cleaner itself.

Start up

- Connect the device to the spray lance of the high pressure cleaner.
- Tighten covering nut firmly.
- Cordon off the working area to prevent persons coming close to the machine when it is being operated.
The distance must be at least 5 m from the work location.

Operation

- Turn on the high-pressure cleaner.
- Adjust the water pressure and the water temperature as per the following recommendations:

Underground	Pressure [MPa]	Temperature [°C]
Tile floors	18...22	cold
Paving stones	15...18	
Tar	3...4	95

Note:

For sensitive surfaces, start with low pressure and increase the pressure as needed.

- Hold the device over the spot with the chewing gum.

Note:

Set up the water temperature for hot water operation so that water jets emerge from the nozzles. If there are vapor flags, the water temperature must be lowered.

Caution

Risk of damage. To prevent damage to the floor, move the unit back and forth with the hand spray gun open.

- Open the hand spray gun and move the device back and forth by about 20 mm. The cleaning process can be monitored through the grid.
- Remove colourations on tiles or stones by recleaning them with cold water (20...25 MPa).

Empty the collection container

- The removed chewing gum is collected in the device.
- Turn off the high pressure cleaner and secure against restart.
 - Remove the lid.
 - Tilt the device on its side and remove the chewing gum.

Shutting down

- Turn off the high pressure cleaner and secure against restart.
- Unscrew the device from the spray pipe.
- Empty the collection container.
- Rinse the device with cold water.
- Store in a frost-free environment.

Maintenance

Replacing the nozzle plate

- Turn off the high pressure cleaner and secure against restart.
- Figure 2, see cover page**
- Unscrew the acorn nut with the open wrench, SW 36.
 - Remove the nozzle plate.

Figure 3, see cover page

- Unscrew the filter.
- Screw in the new filter.
- Turn on the high-pressure cleaner.
- Rinse the filter by briefly opening the hand spray gun consecutively.
- Turn off the high pressure cleaner and secure against restart.
- Insert the new nozzle plate with a new washer ring.
- Tighten covering nut firmly.

Replacing the skid

Figure 4, see cover page

- Remove two screws.
- Lift the skid (arrows) and release them.
- Take out the sheet metal part.
- Lock the new skid into place.

Figure 5, see cover page

- ➔ Insert the sheet metal part.
- ➔ Fix in the screws and tighten them.

Warranty

The warranty terms published by the relevant sales company are applicable in each country. We will repair potential failures of your appliance within the warranty period free of charge, provided that such failure is caused by faulty material or defects in manufacturing. In the event of a warranty claim please contact your dealer or the nearest authorized Customer Service centre. Please submit the proof of purchase.

Technical specifications

Max. water temperature	°C	95
Max. water pressure	MPa (bar)	35 (350)
Max. water volume	l/min	34
Min. water pressure	MPa (bar)	10 (100)
Min. water volume	l/min	7
Nozzle size	--	050
Length	mm	295
Width	mm	135
Height	mm	205
Weight	kg	2,1